

Maud Cotter

a consequence of – without stiling

30th September 2018 – 6th January 2019.

'*a consequence of – without stiling*' will introduce a major new piece, presented in conversation within selected works from Maud Cotter's practice in this beautiful gallery set in a Mansion in a Park. Cotter is recognised for employing a mix of will and agency in the formation and context in her practice. A stillness in presence is followed by movement, bringing about an inevitable shift of meaning. Macro-physicality finds its point of incision; conscious and insightful, it enters the molecularly complex world of the object. These actions orchestrate new formations in that amorphous bank of matter behind appearance - consciousness modelling form.

The gallery becomes a mercurial landscape of the mind, a place where matter, and consciousness mix. In this world of material compliance and contradiction, no rule applies. In this world or upheaval, lies *a consequence of -*.

The exhibition at LCGA will be accompanied by a specially commissioned text by Sarah Kelleher, University College Cork. The artist's book is for sale, ask at reception.

The exhibition '*a consequence of - without stiling*' at LCGA will be followed by two further solo exhibitions: at The Dock, Carrick-on-Shannon '*a consequence of - a breather of air*' in 2019 and at the Dublin City Gallery, The Hugh Lane, Dublin in 2020 '*a consequence of - entanglement*' in 2020.

Carnegie Building, Pery Square, Limerick, Ireland.

FREE ADMISSION

Tel: +353(0)61 310633; F:+353(0)61 310228; Email: artgallery@limerick.ie; Web www.gallery.limerick.ie

Opening Hours: Monday/Tuesday/Wednesday/Friday & Saturday 10-5.30pm; Thursday 10-8pm; Sunday 12-5.30.

LAST ENTRY 5 & 7.30pm Closed on Public & Bank Holidays.



Comhairle Cathrach
& Contae Luimnigh

Limerick City
& County Council





" ... apparently arbitrarily grown up; governing different sets of properties at different levels of abstraction; pockets of great precision; large parcels of qualitative maxims resisting precise formulation; erratic overlaps; here and there, once in a while, corners that line up, but mostly ragged edges; and always the cover of law just loosely attached to the jumbled world of material things." 1

Maud Cotter lives and works in Cork. She is a graduate and Adjunct Faculty Member of the Crawford Municipal College of Art and Design, Cork, Ireland. Cotter has lectured in Art and Architectural Colleges in Europe and America. She is co-founder of the National Sculpture Factory and a member of Aosdana.

Information: www.maudcotter.com www.domobaal.com

Note:

1 Nancy Cartwright, *The Dappled World, A Study of the Boundaries of Science*, Cambridge: Cambridge University Press, 1999, p.1

Image: Maud Cotter *without stiling* (work in progress) at the National Sculpture Factory, Cork.
Photograph by Roland Paschhoff, courtesy the artist and domobaal.

Carnegie Building, Pery Square, Limerick, Ireland.

FREE ADMISSION

Tel: +353(0)61 310633; F:+353(0)61 310228; Email: artgallery@limerick.ie; Web www.gallery.limerick.ie

Opening Hours: Monday/Tuesday/Wednesday/Friday & Saturday 10-5.30pm; Thursday 10-8pm; Sunday 12-5.30.

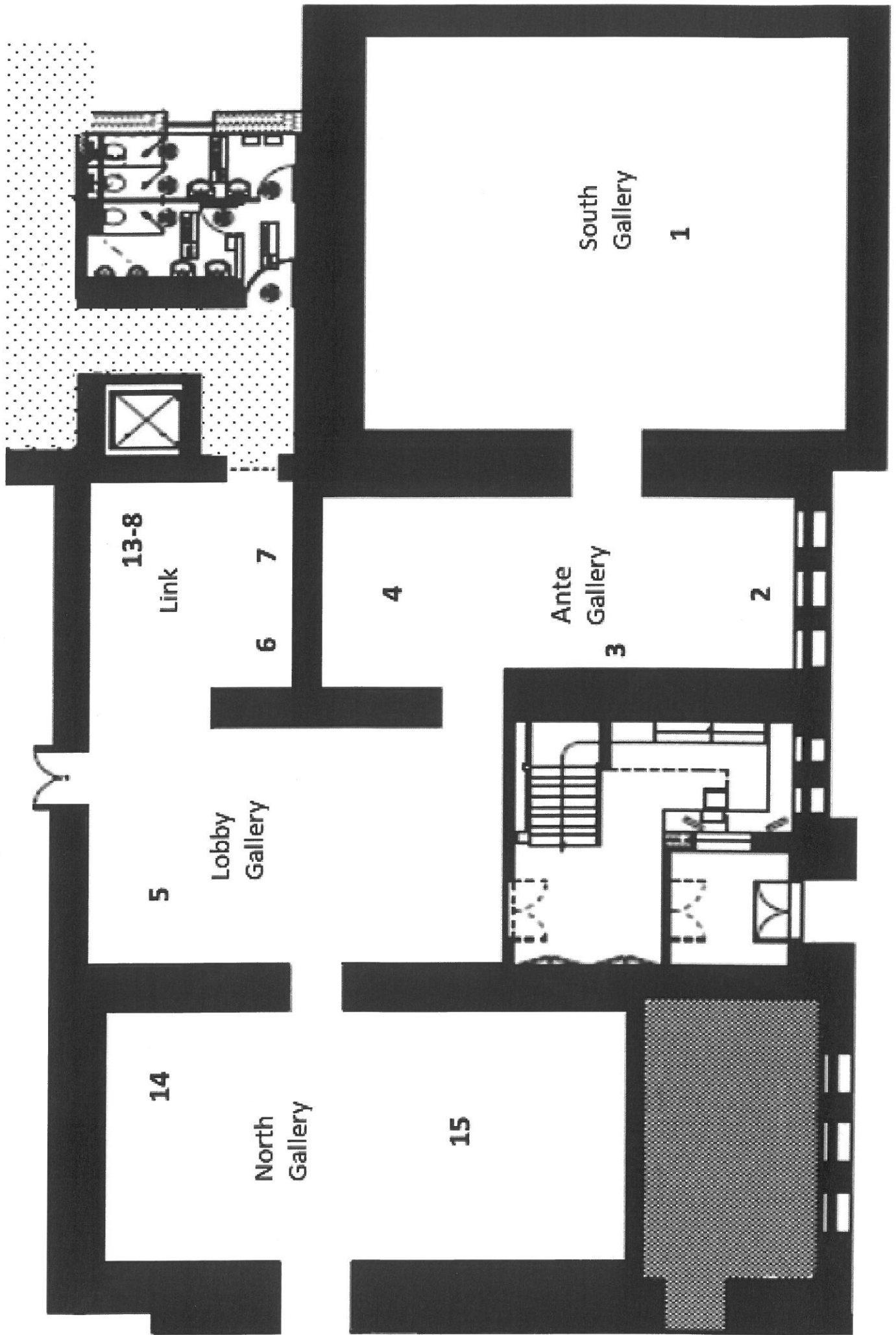
LAST ENTRY 5 & 7.30pm Closed on Public & Bank Holidays.



Comhairle Cathrach
& Contae Luimnigh

Limerick City
& County Council





MAUD COTTER consequence of - without stilling

#	title	materials	dimensions	year
1	South Gallery without stilling	1.5 mm Finnish birch ply, glazed	in process	2017-2018
2	Ante Gallery watery life & rock seven	mild steel, wax, latex	74 x 19 x 23 cms	2018
2	watery life & rock nine	mild steel, wax, mirror film	70 x 30 x 22 cms	2018
2	watery life & rock ten	mild steel, wax, rubber	43 x 18 x 23 cms	2018
2	watery life & rock one	mild steel, wax, rubber	52 x 19 x 28 cms	2018
2	watery life & rock eleven	mild steel, wax, rubber cord, prestia		2018
2	watery life & rock three	mild steel, wax, pvc hose	80 x 27 x 26 cms	2018
2	watery life & rock six	mild steel, wax, epe foam cord	90 x 38 x 40 cms	2018
2	watery life & rock eight	mild steel, wax, foam bolster,	110 x18 x 28cms	2018
2	watery life & rock four	mild steel, wax, card, prestia, acrylic	64 x 29 x 30 cms	2018
2	watery life & rock two	mild steel, wax, rubber		2018
2	watery life & rock five	mild steel, wax, foam	75 x 20 x 23 cms	2018
3	a dappled world / one	styfoam, cardboard, prestia, birch ply, paint, mild steel & pencil line	49 x 23 x 25cms	2017
3	a dappled world / two	birch ply, paint, rubber hose, Waterford crystal, mild steel, prestia, cable tie, wire, pencil line	120 x 17 x 18cms	2017
3	a dappled world / three	birch ply, paint, plastic mesh, thread, mild steel, prestia, sponge, pencil line	82 x 27 x 20cms	2017
4	& bone	latex, birch ply, prestia, stainless steel, cement, hazard tape, baling twine, air column bag, turnbuckle, high tension cable, epe foam cord	190 x 140 x 60cms	2017-2018
5	Foyer Gallery matter of fact	mild steel, card, primer	240 x 240 x 300 cms	2016
6	Link Gallery other drawings nineteen	conté, watercolour, pencil, pre-screened paper	29 x 20.5 cms	2018
6	desk drawings one	linen on 300g fabriano, primer, acrylic, birch ply & perspex	89.5 x 116.2 x 4.5cms	2017
7	other drawings eleven	charcoal, primer, pre-screened paper	20.5 x 24.5 cms	2018
7	other drawings four	charcoal, primer, pre-screened paper	20.5 x 24.5cms	2018
7	desk drawings three	linen on 300g fabriano, primer, acrylic, birch ply & perspex	68.5 x 89.2 x 4.5cm	2017
7	other drawings eighteen	charcoal, conte, primer, pre-screened paper	17.5 x 14.5cms	2018
7	desk drawings two	conté, primer, pre-screened paper	17.5 x 14.5 cms	2018
7	other drawings twelve	linen on 300g fabriano, primer, acrylic, birch ply, perspex	68.5 x89.2 x 4.5cms	2017
7	other drawings five	charcoal, primer, pre-screened paper	14.5 x 21 cms	2018
7	other drawings fourteen	charcoal, primer, pre-screened paper	14 x 20.5 cms	2018
8	matter of fact model	charcoal, pre-screened paper	20.5 x 14.5 cms	2018
8		wire, glass, sellotape, wire mesh	6.5 x 30 x 36cms	2017
9	anatomy	mild steel, plastic, mouth blown glass, aluminum tape, blue tape, nuts, bolts	24 x 13 x 13cms	2018
10	notes for consequence of - without stilling, artist's book, edition of 100	modigliani paper, sirio paper, linen thread, wax. Artist's book made in collaboration with Claire Power. Ask at reception	25 x 17.6cms	2018
11	found, edition of 10	black cement fondué, ground, dental plaster, stainless steel, hemp cord; box - bookcloth, marble paper, greyboard, blind embossed text. box made in collaboration with Claire Power.	7 x 9 x 9 cms 7.5 x 10.5 x 15.5 cms	2016
12	spine, edition of 20	botanical watercolour paper, eco fleck paper. made in collaboration with Claire Power.	10.5 x 15 x 1cms	2018
13	a solution is in the room text, edition of 100	concertina; lambeth cartridge, ink, card. box: ink, card; made in collaboration with Coracie Press.	199 x 8 x .25 cms 9.5 x 9.5 x 4.1 cms	2017
14	North Gallery falling into many pieces one	stainless steel, aeroboard, plaster, cotton wool	120 x 80 x 60 cms	2016
14	falling into many pieces three	stainless steel, cotton netting, thread	160 x 60 x 38cms	2017-2018
14	falling into many pieces two	stainless steel, latex sheeting, Finnish ply	152 x 60 x 41 cms	2017-2018
15	the moon is falling	plastic sheeting, prestia, aeroboard, stainless steel	variable dimension	2018